

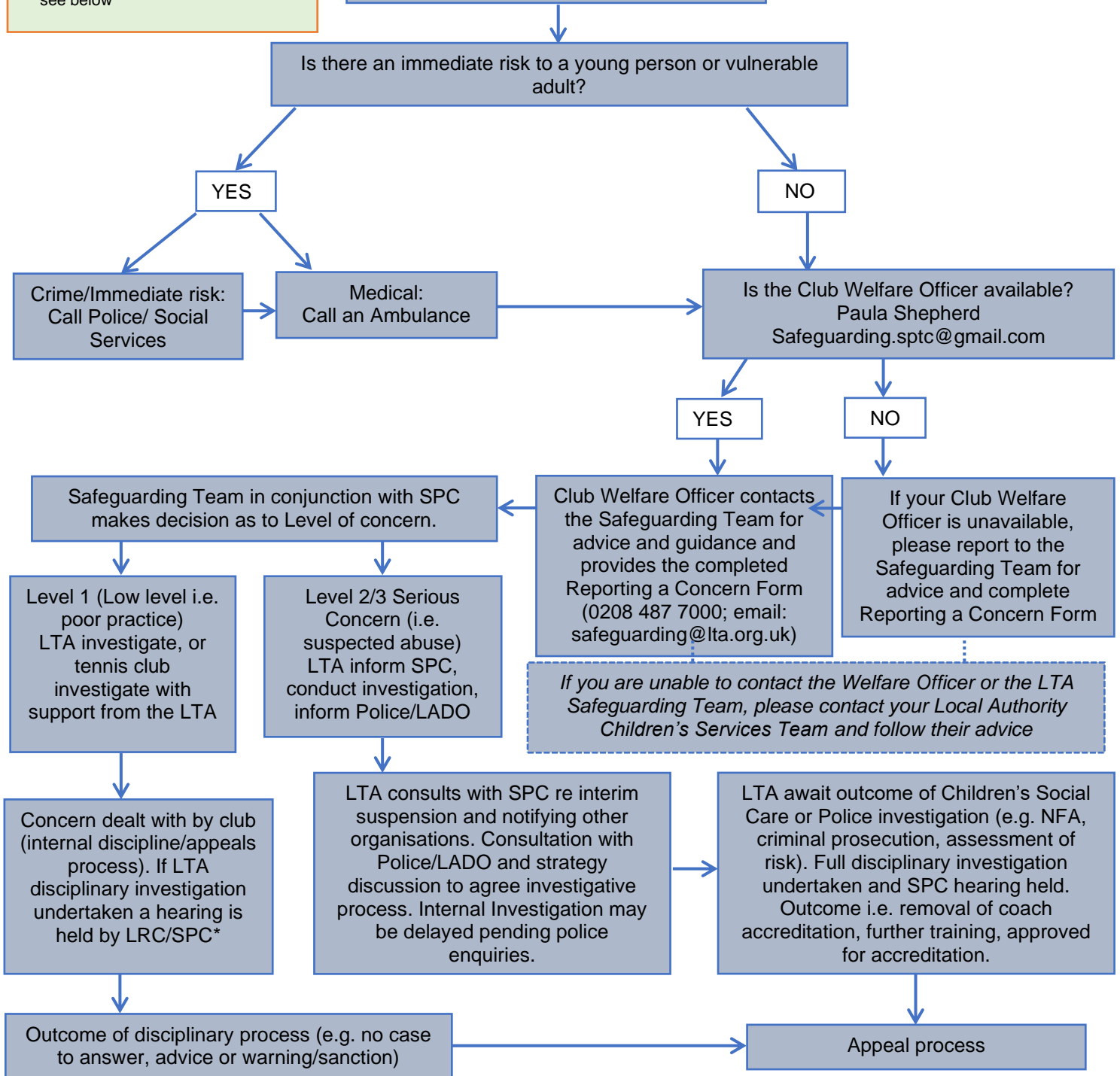
Reporting a Safeguarding Concern

Useful Contacts

British Tennis Services team: 020 8487 7000
 Email: safeandinclusive@lta.org.uk
 NSPCC: 0808 800 5000
 Emergency Services: 999
 ** see below

Concerns arise about the behaviour of a member of staff, coach or volunteer towards a child or vulnerable adult. Make a note of anything you/the witness has seen/said, with dates and times

Note: You should inform the parent/carer of the concern, unless you believe it would put the child/adult at risk, yourself or others at risk



*SPC – Safeguarding and Protection Committee

*LRC – Licensing and Registration Committee

**

- The police in an emergency (999);
- Local Authority Children's Services 0300 123 2224 M-F 09-18.00; out of hours call 101 if not an emergency
- Local Authority Adult Services 0300 123 2224 M-F 09-18.00; out of hours call 101 if not an emergency
- Designated Officer (England only) for concerns/disclosures about a member of staff, consultant, coach, official or volunteer 0300 123 2224
- Disclosure and Barring Service (or Disclosure Scotland; Adult Social Work Team or Health and Social Service Department (Channel Islands) for concerns/disclosures about a member of staff, consultant, coach, official or volunteer 03000 200 190; customerservices@dbs.gov.uk